

ARION
640 630 620 610
540 530 520 510

CLAAS

New standards up to
180 hp.







ARION. New performance levels up to 175 hp.

With the three model series in the ARION family from 100 to 175 hp, CLAAS offers an impressive range and opens up amazing new prospects: all the technical options that were previously found only on the 200-hp tractors are now available from just 105 hp. And farms that favour high performance with simplicity are also catered for with the ARION 600 C series.

Unique comfort.

The CLAAS comfort concept is one of the great strengths of the ARION series, and makes your work as convenient as possible.

Enormous versatility.

The best example: the top model, ARION 640. Where necessary, it can achieve an output of up to 175 hp, thanks to the CPM Powerboost – a power reserve that opens up many new application possibilities.

High efficiency.

The highly developed engines in the ARION series, the advanced transmission technology and the tractive power concept are the ideal basis for extremely economical and efficient work.

The ARION comes up trumps in independent tests too, recently snatching victory from among seven tractors for the title of best power-shift tractor: "ARION 530, the best power-shift tractor tested" (top agrar 12/08).





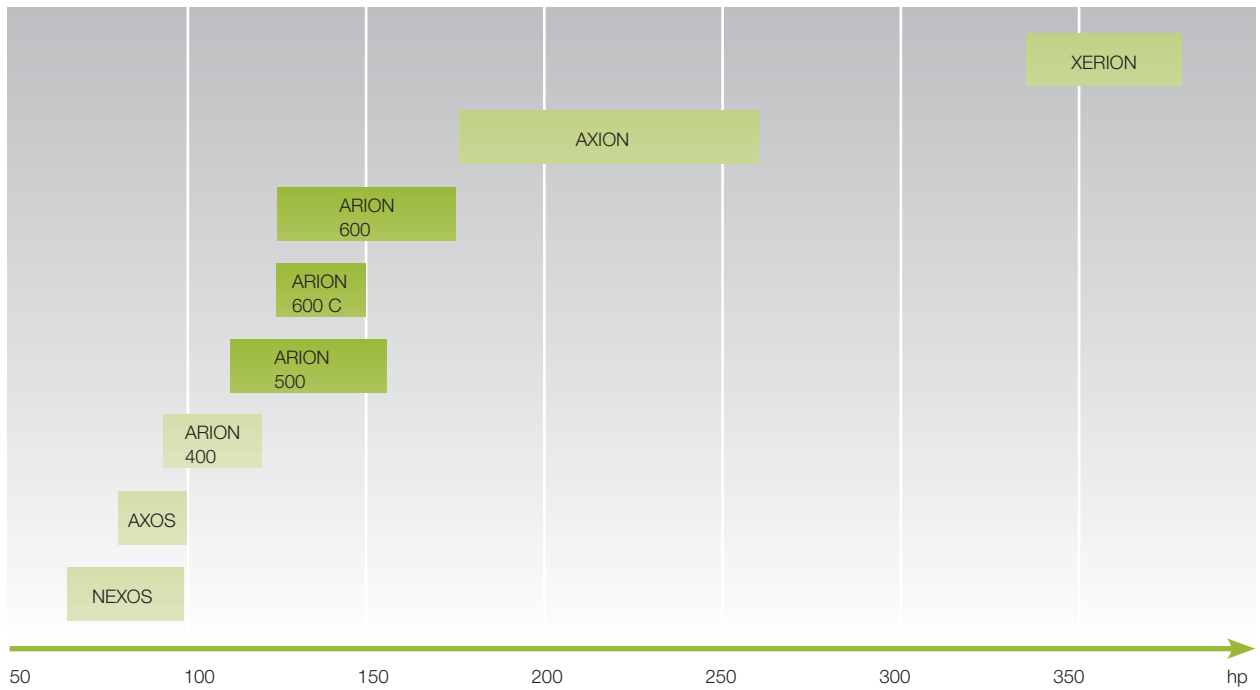
The medium-power tractor segment is often referred to as the heart of the tractor market, because this is where farmers and contractors find the widest variety of models and equipment options. This means customers can configure their ideal tractor in the ARION range, just the way they want it.

Contents.

A wide variety of engines	6
ARION 6-cylinder	8
ARION 4-cylinder	10
Unique comfort	12
CLAAS comfort concept	14
DRIVESTICK and multifunction armrest	16
CLAAS INFORMATION SYSTEM – CIS	18
CEBIS	20
Enormous versatility	22
Output and dimensions	24
Engines	26
Transmission	28
Hydraulics and power take-offs	32
Front loader	34
High efficiency	36
Saving fuel	38
Maintenance	40
CSM, ISOBUS	42
GPS PILOT, CAM PILOT	44
Increasing productivity	46
Ensuring reliability in the field	48
Specifications	50



ARION – for output performance from 112 to 175 hp*.



* All performance data show the maximum output in accordance with the ECE R 24 standard.



You can now demand a lot more between 112 and 175 hp.

Three ranges between 112 and 175 hp.

With the ARION series, CLAAS has introduced fresh ideas in the mid-power tractor class. The models cover a large power range and meet the various demands of a typical working day.

Are you looking for a versatile 4-cylinder tractor, for example? If so, the ARION 500 series is the one for you. Or do you have more of a need for 6-cylinder power? Then the ARION 600 is definitely your first choice.

And for those for whom absolute top-level comfort and handling aren't top priority, there's also an entry-level model: the ARION 600C. There's a separate brochure on the ARION 600C with a lot more information and interesting details.

The 6-cylinder tractors from the ARION range: the 600 series.

Normally, you'd expect a normal tractor with 38" rear wheels and an unladen weight of 5 to 6 tonnes to develop no more than 150 hp. However, our top model, the ARION 640, sets new standards by raising this limit by 25 hp. Thanks to the CLAAS POWER MANAGEMENT (CPM), the tractor develops an impressive maximum engine output of 175 hp.

The 4-cylinder tractors from the ARION range: the 500 series.

The three ARION models 510, 520 and 530 have maximum outputs of 112 to 128 hp to ECE R 24 standard. The top model in the 500 series, the ARION 540, develops an engine output of 135 hp. Thanks to the CLAAS POWER MANAGEMENT boost, it has the potential of developing a maximum output of 155 hp, which can be used in almost all applications.



A wide variety of engines

ARION 600. 6-cylinder tractors from 125 to 175 hp.





The dimensions of a 150-hp tractor, with up to 175 hp with CPM Powerboost: the ARION 640 top model.

Anyone interested in tractors will, of course, also want to look at the performance data – not always such an easy task. It's often a case of wading through mountains of figures and complicated terms: various standards, boost power, power rating, maximum output, PTO, and shaft output. It may often be the case that the output as sold and paid for is not actually of much use in the field. Therefore, you should be particularly critical when buying a tractor – it's worth it.

The ARION 640 top model is equipped with the CPM power boost. This provides an additional 20 hp boost power exactly when it is needed – available with PTO engaged, under hydraulic load and in Gear C1 and above (around 6 km/h). This allows you to make the most of your tractor's performance potential, with no additional tuning required.

Engine output, ARION 600 series.

ARION	Power rating kW/hp at 2,200 rpm	Max. kW/hp at 2,000 rpm	Boost kW/hp at 2,000 rpm
610	85/115	92/125	–
620	96/130	99/135	–
630	103/140	110/150	–
640	110/150	114/155	129/175

Values in accordance with ECE R 24

6-cylinder



The top model in the 4-cylinder range: the ARION 540 with 155-hp engine output.

On many farms, life without a tractor with a 4-cylinder engine would be unimaginable nowadays. Its advantages are clear: it is compact and versatile, has very good front loading characteristics and an overall lighter weight. But more and more often, the "small" 4-cylinder now has to do the work of a "large" 6-cylinder tractor.

This raises the issue of greater power, and CLAAS now has an ideal solution with the ARION 540. Thanks to the CPM power boost, this new top model has a potential engine output of 155 hp both on the road and in the field. That's outstanding in the 4-cylinder segment, and opens up many new areas of application.

Engine output, ARION 500 series.

ARION	Power rating kW/hp at 2,200 rpm	Max. kW/hp at 2,000 rpm	Boost kW/hp at 2,000 rpm
510	77/105	82/112	–
520	85/115	90/122	–
530	92/125	94/128	–
540	96/130	99/135	114/155

Values in accordance with ECE R 24



CPM boost: useful for PTO applications.



CPM boost: useful for any work over 6 km/h.

ARION 500. 4-cylinder tractors from 112 to 155 hp.



CPM boost: useful on the road and where there is a reduction in hydraulic power.

4-cylinder

Demand greater comfort – your working day is hard enough.

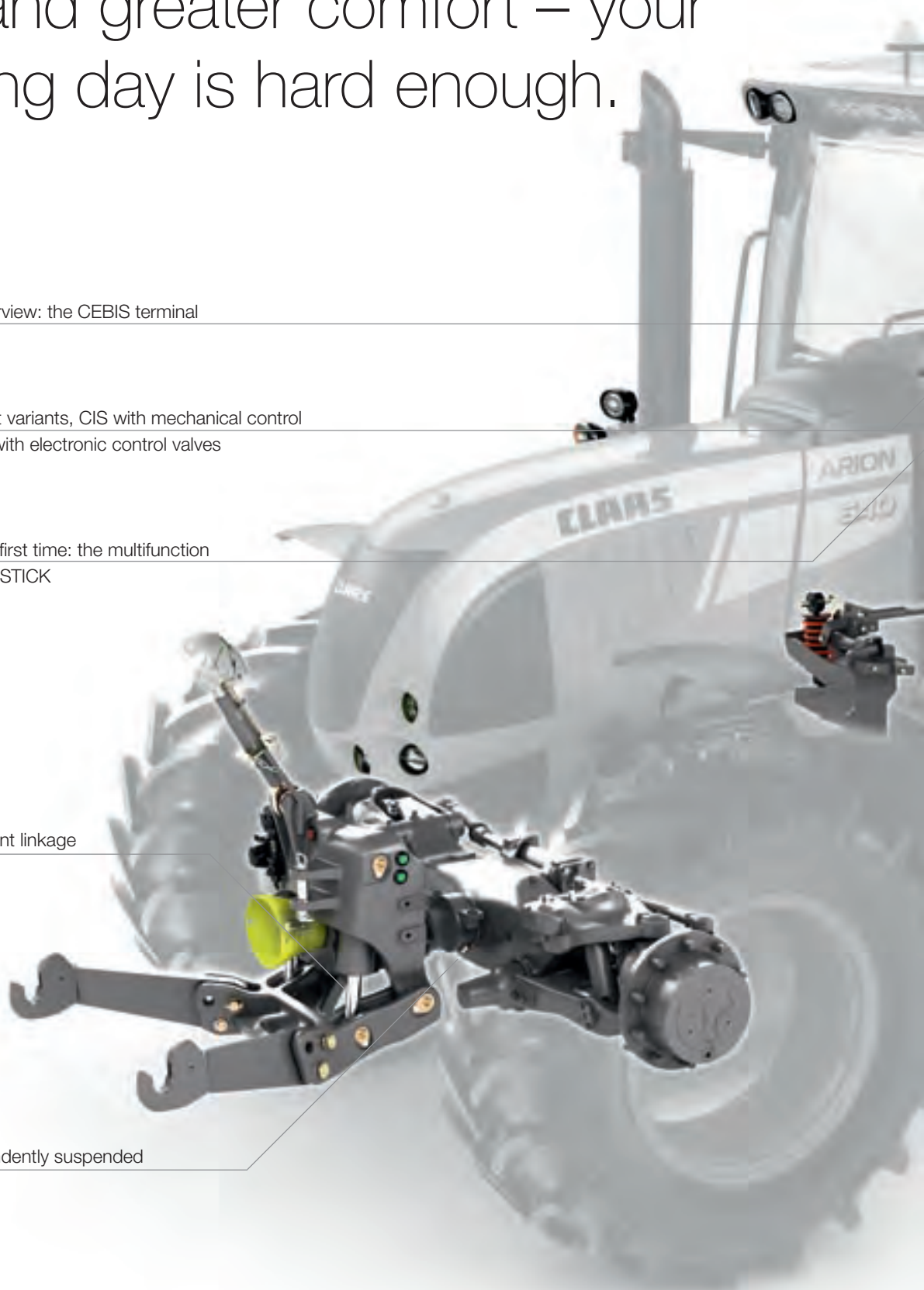
For the perfect overview: the CEBIS terminal

Optional equipment variants, CIS with mechanical control valves and CEBIS with electronic control valves

Everything to hand first time: the multifunction armrest with DRIVESTICK

Damping for the front linkage

PROACTIV independently suspended front axle





The light concept with intuitive operation. Up to 14 spotlights, with four optional Xenon lights available.

Always stay cool: the automatic climate control

A good place to work from: the pneumatically sprung low-frequency seat

Vibration dampening as standard on rear linkage

Unique in the performance class: the 4-point cab suspension

The ideal 2.82-m wheelbase (ARION 600) for directional stability and extreme comfort

Unique comfort



The CLAAS comfort concept is much more than just another equipment feature.

A tractor driver spends up to 2,000 hours or more on the tractor seat every year – that's a long time. The individual controls are activated tens of thousands of times during those 2,000 hours, which is asking a lot. To make the working day as comfortable as possible for the driver, CLAAS is the only manufacturer in this performance class to supply the 4-point cab suspension combined with a sophisticated independent front suspension.



MP3 radio with Bluetooth function.

The CLAAS comfort concept. To keep you sitting pretty – with everything to hand.



Everything's been thought of to make your working day easier:

- The instrument panel – well laid-out and functional
- Self-cancelling turn indicators
- New air outlets in the instrument panel provide draught-free air conditioning
- Air conditioning comes as standard, with automatic climate control system optional
- The cab: unusually spacious in this class
- Unique: the 4-point cab suspension
- Comprehensive comfort, even with implements: damping for front and rear linkages
- Up to eight front and six rear headlights – also providing good lighting for areas to the right and left of the tractor
- Electrically adjustable and heated mirrors, as well as heated rear window
- MP3 radio with Bluetooth function



Air conditioning comes as standard.

CLAAS comfort concept

Control at your fingertips.

The unique DRIVESTICK.

The DRIVESTICK is used intuitively and gives you full control via the HEXASHIFT transmission. This means cumbersome shifting operations become a thing of the past – all you need is nimble fingers to shift as you please.

The perfectly ergonomic armrest.

The multifunction armrest has been designed to provide the best ergonomics, and is the key to relaxed and effective working. It's the result of extensive analyses of the operating processes in the cab: frequently required functions are located on the multifunction armrest, while less frequently required functions are located on the right side console.





Operation for the rear linkage and headland management CSM

DRIVESTICK for operating the HEXASHIFT automatic transmission

Hand throttle

Activation of HEXACTIV automatic transmission and push switch for two stored engine speeds

Rear linkage depth adjustment

ELECTROPILOT for proportional operation of up to three electronic spool valves

F1 and F2 function, e.g. for direct access to the task management

Convenient and proportional operation of up to two electronic spool valves

Switch to change the ELECTROPILOT remote valves

The benefits for you:

- Intuitive operation, even with different drivers
- You stay relaxed and work effectively
- You manage work sequences in simple steps
- Full concentration on the field work
- A relaxed hand position, even during long working days
- Smooth-running controls
- No relative movement between body and armrest, since it is fastened to the seat



DRIVESTICK
Multifunction armrest



The CLAAS CIS INFORMATION SYSTEM.

The ARION CIS model is equipped with mechanical spool valves and the dash-mounted CLAAS INFORMATION SYSTEM.

ARION	With CIS	With CEBIS
Multifunction armrest	●	●
DRIVESTICK	●	●
PTO shaft management	○	●
PTO shaft management	●	●
Mechanical spool valves	●	–
CIS in instrument panel	●	–
Electronic spool valves	–	●
CEBIS terminal	–	●
CSM headland management	–	●
Additional ELECTROPILOT	○	○

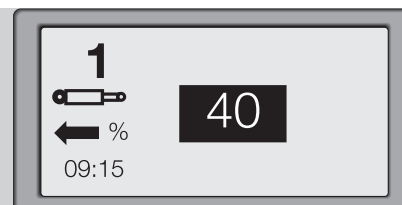
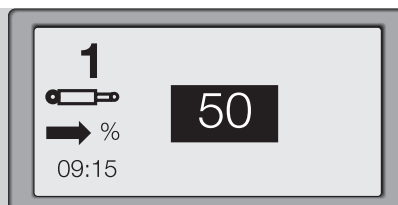
● Standard ○ Option – Not available

With its compact design, the CIS display provides the same user ergonomics as the CEBIS terminal: all settings can be operated using a control knob and the "ESC" key.

The following functions can be set using the CIS:

- HEXACTIV power shift unit switching points
- HEXASHIFT transmission start ratio
- Progressiveness of REVERSHIFT clutchless reverser
- Time and volume settings for the electronic spool valves on the ELECTROPILOT (optional)
- On-board computer functions such as area covered, fuel consumption, area output
- Display of the maintenance intervals

On this variant, there are two optional electronic spool valves which can be conveniently operated using the ELECTROPILOT on the multifunction armrest.

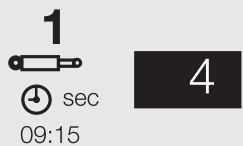


CIS keeps you up to date.



The advantages of models with CIS display and mechanical spool valves:

- All the information you need is shown on the HEXASHIFT display on the A-pillar and CIS
- New steering column with self-cancelling indicators
- Optional: ELECTROPILOT with two electronic spool valves
- Fitted with multifunction armrest and DRIVESTICK for transmission operation as standard
- Up to four mechanical spool valves with float setting
- Simple to operate, even with different drivers



Adjustment example: adjusting the flow and time control of an ELECTROPILOT spool valve with the CIS display.

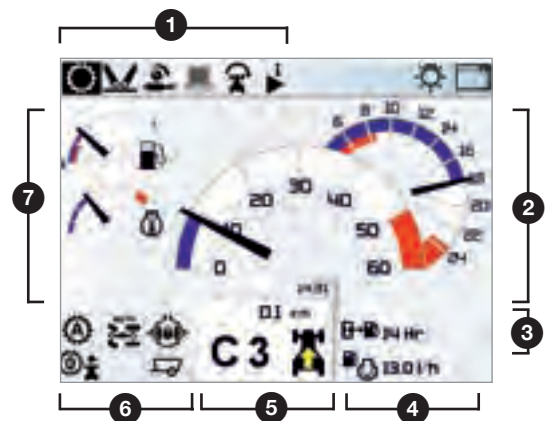
CIS – CLAAS INFORMATION SYSTEM



With CEBIS, you can experience the premium-class technology that has proven its worth time and again in our top-line LEXION and XERION offerings. This technically advanced tractor terminal gives you complete control of all machine functions by means of a large, easy-to-read display and simple operations via a rotary selector.

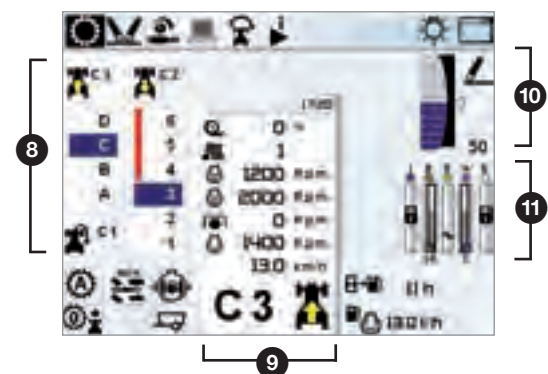
CEBIS on the road.

- 1 Menu bar
- 2 Ground speed and rpm
- 3 User-defined information
- 4 Detailed view of function key assignment
- 5 Status display, transmission and direction of travel
- 6 Vehicle status information
- 7 Fuel and temperature display



CEBIS in the field.

- 8 Expanded transmission display
- 9 Detailed view of working parameters
- 10 Status display of rear linkage
- 11 Spool valve settings status



CLAAS SEQUENCE MANAGEMENT memorises the first work sequences on the headland and repeats it as required. It's as simple as a cassette recorder – push record – play – pause – stop.

CEBIS – everything under control.

What makes CEBIS different from other tractor terminals:

- Just two elements for operation: rotary selector and ESC
- Clear graphic display and easy-to-understand symbols
- Quick access to sub-menus through DIRECT ACCESS
- Integrated built-in performance monitor as standard for checking area output, fuel consumption, job data
- Attractive, easy-to-read colour screen
- Two different screen layouts to choose from as standard – one for road travel and one for field work

The benefits for you:

- You're always fully in the picture regarding all relevant processes with the actual status
- It is easy to operate and intuitive to use
- You leave nothing to chance, because you always know what's going on
- You can concentrate more on the field work, because CEBIS automatically does the routine tasks

CEBIS quick access with DIRECT ACCESS.



Activate function.

Press DIRECT ACCESS key.

Change settings directly in sub-menu.

It's incredible what the ARION can pull, lift and transport.

ARION 500 – High power range up to 155 hp max. output with 4-cylinder DPS engines

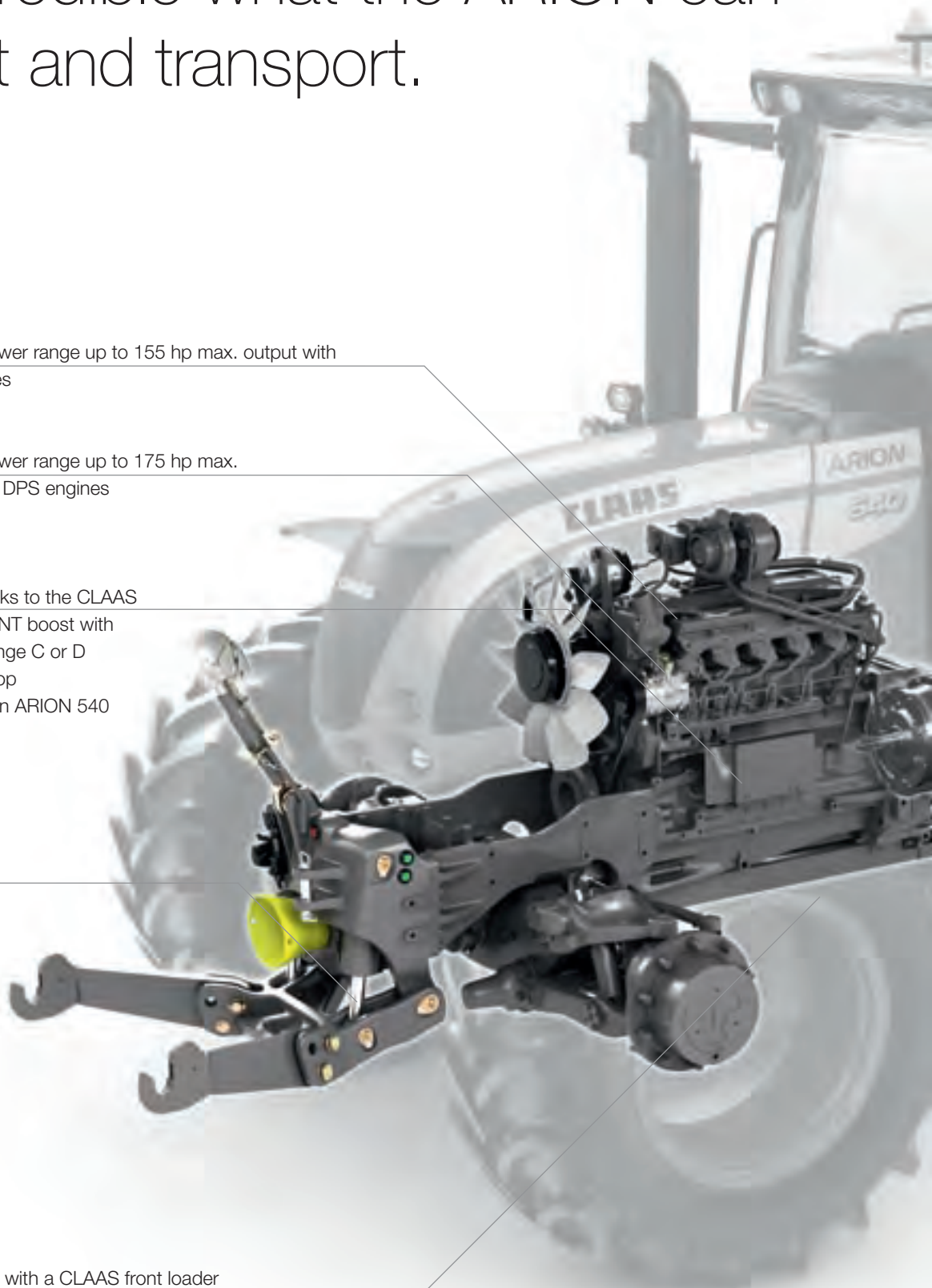
ARION 600 – High power range up to 175 hp max. output with 6-cylinder DPS engines

Additional 20 hp, thanks to the CLAAS POWER MANAGEMENT boost with

- Transmissions in range C or D
- Hydraulic power drop
- PTO output drop (on ARION 540 and 640)

Integrated front linkage with front PTO and huge lifting capacity of up to max. 4,000 kg.

The ideal combination with a CLAAS front loader





High continuous lift capacity from 5,100 kg on the ARION 640 (measured at 610 mm)

From 110 m/h to 50 km/h with the HEXASHIFT transmission

Low weight-to-power ratio from 34 kg/hp (46 kg/kW) keeps fuel consumption low during partial load work

Enormous versatility

No matter what you demand from it, the ARION always cuts a fine figure.

Short overall length



Long wheelbase

ARION 600 = 2.82 m / ARION 500 = 2.56 m

Short overall length for:

- Good manoeuvrability
- Short trailer combination on the road
- Good visibility
- Good guidance of front attachment devices

Long wheelbase for:

- High level of driving comfort
- Directional stability
- Higher tractive power, thanks to better weight distribution
- Good and secure road holding
- Higher lifting power, thanks to better weight distribution



Up to 175 hp with boost

Up to 175 hp usable engine output:

- In tillage from C1, approx. 6 km/h
- During seeding – heavy PTO work
- During trailer and transport jobs
- During baling
- When drilling: high output demand from hydraulically driven fan



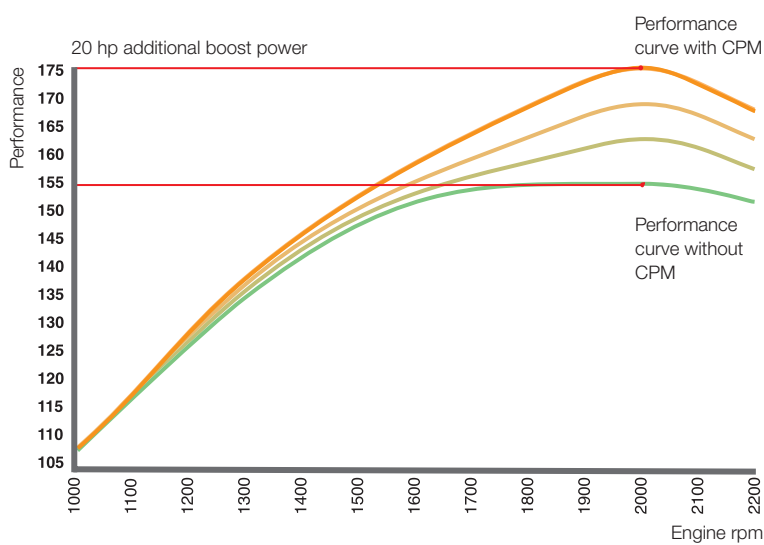
Good weight-to-power ratio:

- For low fuel consumption during light work
- For low ground pressure during field maintenance
- For dynamic road transport
- For a high permissible load capacity
- Weight distribution front/rear 53% / 47%

Weight-to-power ratio from only 34 kg/hp (46 kg/kW)

The weight-to-power ratio can be increased through ballasting if higher traction is required.

ARION – 20 hp power in reserve when others have reached their limit.



CLAAS POWER MANAGEMENT CPM.

The flagship models ARION 540 and ARION 640 are equipped with the innovative CLAAS POWER MANAGEMENT system. Depending on the required tractive power, PTO shaft output or hydraulic power reduction, up to 20 hp of additional engine output is released in stages under the following conditions:

- Transmission in range C or D (C1 = 6 km/h at 1,900 rpm)
- Load on hydraulics
- Load on PTO

The additional boost power is released by the CPM in six stages, which means it never releases more power than is actually required, allowing you to run with optimum fuel efficiency.

Examples of applications in which the additional output of up to 20 hp from the CPM is used.





1 2



3



4



1) DPS 4-cylinder or 6-cylinder engines

- Meets TIER-3 emissions standard
- 4-valve cylinder head
- Air-to-air intercooler
- Up to 43% torque increase
- Modern CPM boost technology
- Up to 10 hp reserve power
- Electronically controlled
- 500-h oil-change interval

2) Variable geometry turbo (VGT)

For a high torque even at low engine speeds, the turbine blades are adjusted according to the speed and load. No more "turbo lag" is experienced, and ultimately fuel consumption is reduced.

3) Common-rail injection system

Common rail means improved response characteristics, lower fuel consumption and a more precise adjustment of the engine to all operating statuses.

4) Cooled exhaust gas recirculation

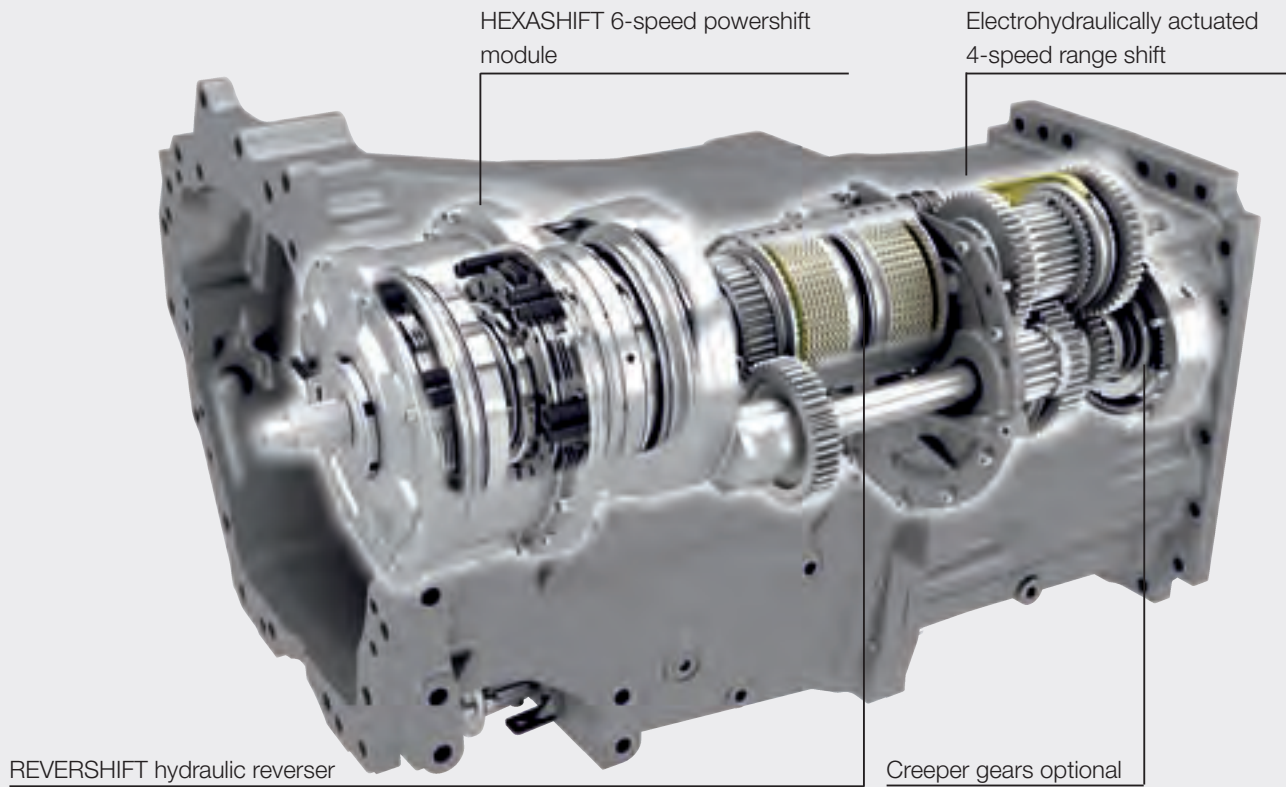
The recirculation of part of the exhaust gas flow significantly reduces pollutant emissions and increases the efficiency of the fuel burn.



Engines

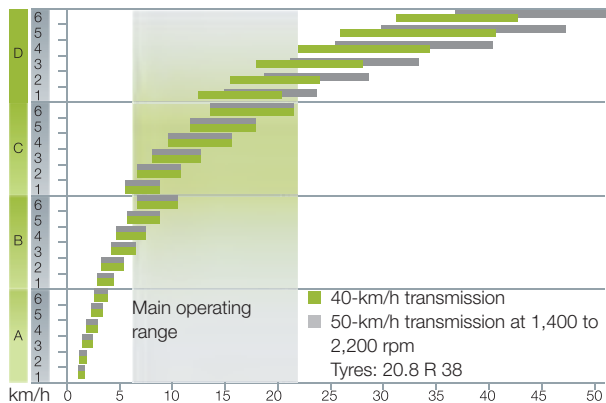
HEXASHIFT – shift with ease.





The HEXASHIFT automated transmission from CLAAS.

It supports you with the best high technology. Thanks to HEXASHIFT and the DRIVESTICK, you can easily shift between the six powershift ratios and the four ranges with your fingertips, or shift automatically with the HEXACTIV powershift unit.



CLAAS HEXASHIFT offers clear benefits.

- No more range shifting with the clutch
- Good gear shifting in all ranges
- Fully automatic shifting operation with HEXACTIV power shift unit
- Good efficiency in the field and on the road for low fuel consumption
- Creeper gear options down to 110 m/h
- Comfortable adjustment options with CIS and CEBIS
- High operating comfort with the DRIVESTICK
- Power train management for smooth changes in range and powershift operations



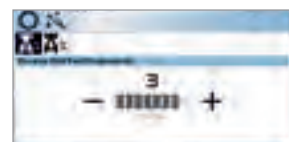
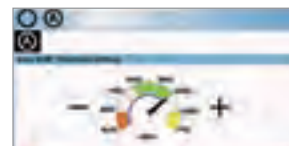
HEXASHIFT features on the ARION.

The starting ratio can be individually set via the CEBIS or CIS terminal to ensure that the ARION with HEXACTIV mode always pulls away in the correct gear.

The operator can choose between three modes in CEBIS or CIS for the power shift unit.

- 1 Fully automatic: HEXACTIV shifts for variations in engine speed depending on engine load, vehicle speed and the driver's wishes / accelerator position.
- 2 PTO mode: HEXACTIV shifts in such a way as to ensure the engine speed / PTO speed remain as constant as possible.
- 3 Manual mode: HEXACTIV shifts according to a fixed engine speed programmable by the driver.

The modulation of the REVERSHIFT clutchless reverser can be changed in the CEBIS or CIS menu.

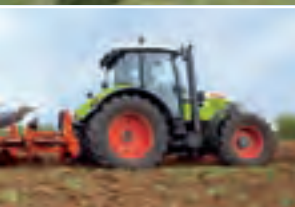


The settings indicated above are carried out via the CEBIS terminal. In the case of the variant with mechanical spool valves, the values are set with the CIS terminal on the instrument panel.

The ARION changes gear for you, so you can concentrate on other tasks.



Four driving strategies.



Mode

Switching

1. Manual shifting in field mode

- Field mode selected
- HEXACTIV switch not pressed

- Range shifting by pressing the DRIVESTICK through the stop
- Powershift shifting (1–6) by tapping the DRIVESTICK

2. Manual shifting in transport mode

- Road mode selected
- HEXACTIV switch not pressed

- Range shifting by tapping the DRIVESTICK
- Powershift shifting (1–6) by tapping the DRIVESTICK

3. Automatic shifting in field mode

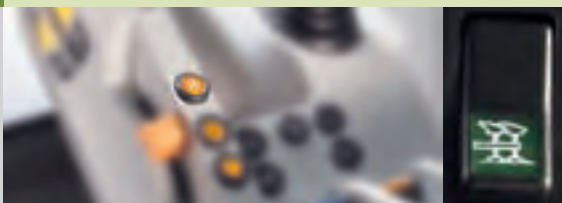
- Field mode selected
- HEXACTIV switch pressed

- Range shifting by pressing the DRIVESTICK through the stop
- Powershift shifting (1–6) automatic

4. Automatic shifting in transport mode

- Road mode selected
- HEXACTIV switch pressed

- Range shifting automatic
- Powershift shifting (1–6) automatic



Transmission

The rear of the ARION – sophisticated down to the smallest detail.

The more powerful the equipment, the more important the hydraulics become.

- Load-sensing hydraulic system with 110 l/min output
- Easily accessible operation of four mechanical spool valves on the right-hand console
- In conjunction with CEBIS: the operation of up to six electronic spool valves on the multifunction armrest
- All electronic spool valves with time control and flow control

PTO choice:

- 540/1,000 power take-off as standard
- Optional 540/540E/1,000/1,000E power take-off
- Ground power take-off available as an option
- Automatic PTO control when lifting and lowering the linkage
- Flange PTO as standard
- Rear actuation as standard



Comfortable operation of the rear linkage.



Packed with good ideas:
the rear of the tractor.

- Uncluttered design
- Completely new hydraulic valve connections with excellent accessibility and release levers for connecting under pressure
- Robust dust caps and spilt oil tank keep everything clean
- Hydraulic top link
- Robust and simple top link holder
- Excellent visibility of the drawbar coupling and lower links
- Both mudguards are fitted with remote controls for linkage, PTO shaft and an electronic spool valve
- Excellent side visibility, thanks to sloped mudguards
- "Power beyond" preparation available ex factory
- 5.1 t continuous lifting power for the ARION 640 (measured 610 mm from the end of the linkage arms)

Fully equipped with integrated front linkage
and front PTO shaft.

- 3 or 4 t max. lifting capacity
- Three positions for the front lower link: folded up, fixed working position and float position in slotted hole
- Short distance between front axle and mounting points for improved header guidance
- 1,000 rpm integrated PTO with external stop actuation
- External operation of front linkage in conjunction with electronic spool valves
- Integrated spool valves, open return line, 25 A and 7-pin trailer plug



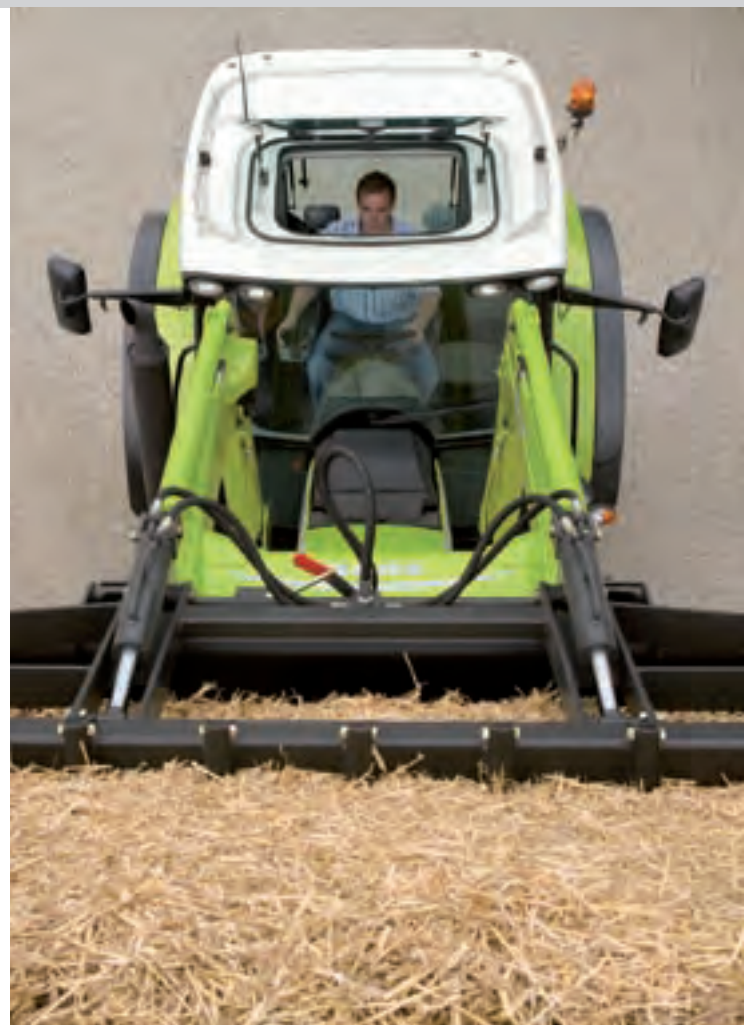
Front linkage, external operation

Hydraulics
PTO

CLAAS FL – increase your productivity.

No compromises when it comes to selecting comfort features for front loader work.

CLAAS front loaders feature high-quality design and technology, together with perfect workmanship. This makes them the ideal complement to the high standards of the CLAAS ARION. The operation of the various attachments is perfect and, of course, the view to the working area is first-rate.





Outstanding features of the CLAAS front loader.

- Front loader consoles tested to withstand heaviest loads available ex factory
- Excellent view of the working area through the glass sunroof
- Excellent visibility preventing damage: hoses integrated in the front loader
- Three convenient operating variants to choose from: PROPILOT, FLEXPILLOT, ELECTROPILOT
- PCH hydraulic parallel guidance for excellent, high-precision handling characteristics
- FITLOCK system for quick and convenient attaching/detaching
- MACH quick-attachment coupler for electric and hydraulic circuits
- SHOCK ELIMINATOR vibration dampening for extreme driving comfort
- Excellent lifting power and a wide selection of attachments
- And of course full CLAAS service



ARION	FL 150	FL 120	FL 100
640	•	•	–
630	•	•	–
620	–	•	–
610	–	•	•
540	–	•	–
530	–	•	–
520	–	•	•
510	–	–	•
Lift capacity, kg	2,670	2,490	2,190
Lifting height, m	4.60	4.15	4.00



Front loader

Investment in efficiency always provides the best returns.

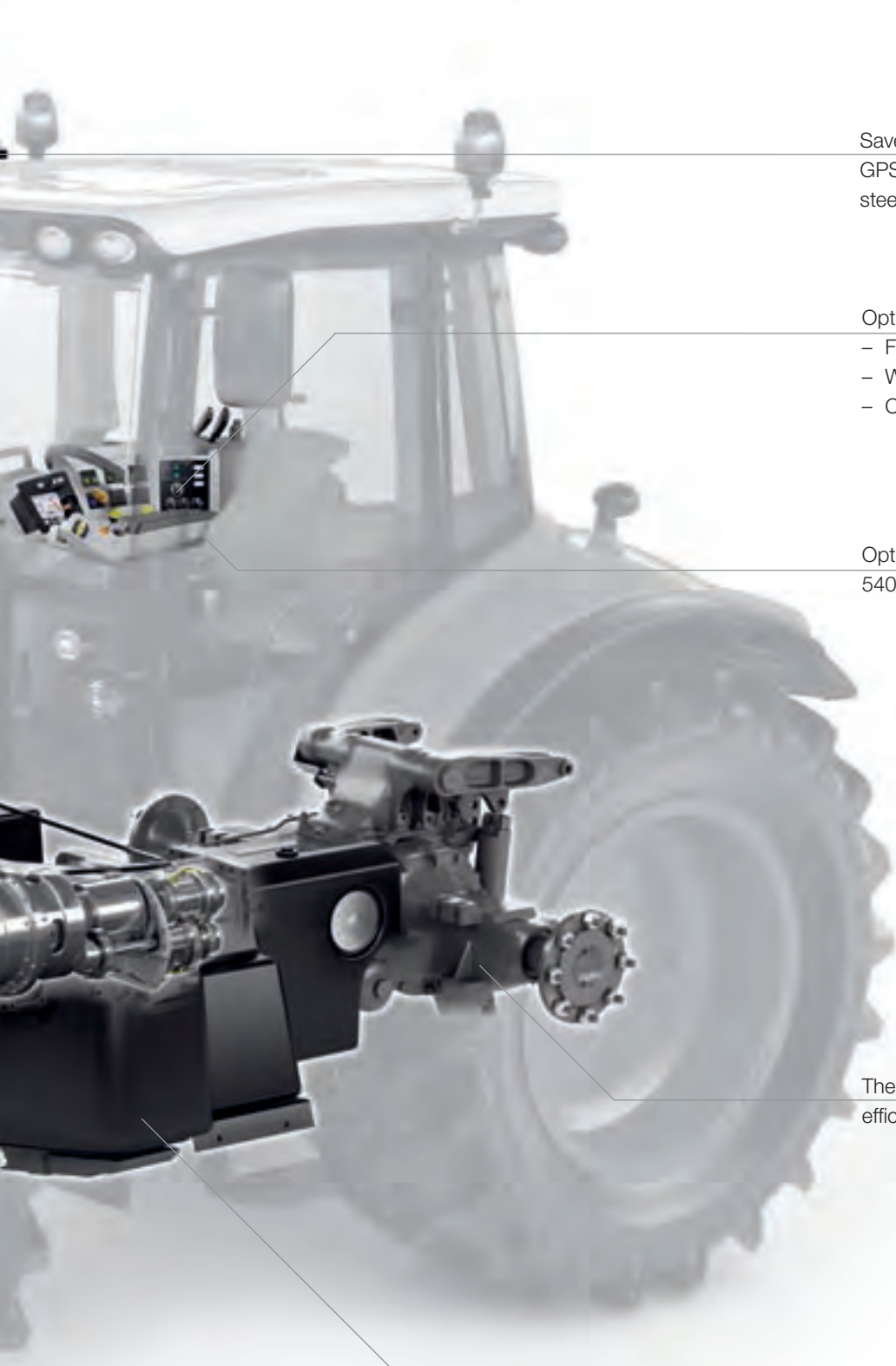
Maintenance and accessibility made easy, thanks to one-piece bonnet

Fuel-saving engine technology:

- Variable VGT turbo
- Cooled, external exhaust gas recirculation
- 4-valve cylinder head
- Common-rail injection system
- Controlled viscous fan
- Electronic injection

Electronic power train management





Save up to 10% costs with the GPS PILOT and CAM PILOT automatic steering systems

Optional CEBIS with:

- Fuel consumption indicator
- Work order processing
- CSM headland management

Optional: four PTO speeds:
540/540 ECO, 1000/1000 ECO

The HEXASHIFT transmission is very efficient, with low power consumption

Large fuel tanks with a capacity of up to 330 litres (ARION 600) or 250 litres (ARION 500)

High efficiency



Whether four or six cylinders, few will fail to be impressed by a constant output range of up to 550 rpm and a powerful torque increase – and higher output also means lower diesel consumption. Thanks to the engine technology and CLAAS POWER MANAGEMENT, not a single litre of valuable fuel is wasted. Additional output is mobilised only if it is actually required. This means long periods of work in the field, thanks to lower consumption. Large fuel tanks have further benefits and hold up to 250 litres in the ARION 500 models and 330 litres in the ARION 600 models.

The automatic HEXASHIFT transmission makes another valuable contribution to particularly effective and economic working. It's characterised by high mechanical efficiency matched to exactly the right engine rpm and a working speed which always gives you the best results in every application. No matter what speed range you're working in, cost-effective running has top priority.

Low fuel consumption, thanks to ARION technology.

- Perfectly matched transmission and rear axle for a high degree of efficiency
- Engines with
 - Variable turbo
 - Exhaust gas recirculation
 - 4-valve cylinder head
 - Common-rail injection system
 - Viscous fan
 - Electronic injection
- Low weight-to-power ratio
- Electronic powertrain management
- CLAAS POWER MANAGEMENT CPM with step-by-step release of additional engine output (ARION 540/640)
- 40 km/h or 50 km/h at reduced speeds
- ECO PTO 540 and 1,000 rpm
- Load-sensing hydraulic circuit

We can't lower the price of diesel,
but we can lower the consumption.



CLAAS's philosophy: negligible losses in drive performance for more power to the wheels and less fuel consumption.

The top agrar test (12/08) says it all:

"The best power-shift tractor tested."

Seven four-cylinder tractors in the 125-hp range were tested by the independent testing organisation DLG (Deutsche Landwirtschaftsgesellschaft). The tests measured the tractors' engine and tractive power.

"In terms of pulling operations, the best tractor tested was the ARION. It achieved the highest degree of tractive power in the group at nominal engine speed and with the lowest specific fuel consumption (284 g / kW/h), equating to 10% below the group average and as much as 30% below that of the tractor with the highest consumption."



Saving fuel

Shorter maintenance times, longer service intervals.



Quick maintenance, thanks to easy accessibility.

Even during maintenance, the ARION clearly scores points. The one-piece bonnet allows you quick and easy access to all service and maintenance points. In this way, all maintenance work can be carried out with just a few simple actions.

- Simple oil check
- Easy to top up
- Quick air filter cleaning and replacement
- Straightforward cleaning of the cab air filter
- Each radiator is easily accessible





Lower costs, thanks to long maintenance intervals.

The ARION boasts particularly long service intervals. That means that you can get loads of jobs under your belt before having to think about maintenance. And you don't need to tie a knot to remember when the next service is due – CEBIS or CIS look after your schedule and notify you in good time.



The benefits for you:

- You have access to the most important maintenance points
- CEBIS or CIS keeps you up to date with regard to the maintenance status
- You can carry out simple maintenance operations yourself
- Long intervals allow you greater flexibility of operation
- Long-term maintenance also means lower costs

Maintenance

The intelligent CEBIS interface saves you a lot of time.

CLAAS SEQUENCE MANAGEMENT.

The CSM headland management does your work for you at the headland: complex sequences are stored and retrieved at the press of a button, and the recorded sequences can be displayed and processed via the CEBIS terminal.

- Recording of up to four sequences
- Actuation of sequences via buttons on the side of the multifunction armrest or the F1 and FS function keys on the multifunction armrest
- Presentation of the work sequences via CEBIS
- Subsequent changes to CSM processes via the CEBIS terminal



Automatic control of:

- Rear linkage, front linkage
- Up to six time-controlled spool valves
- Rear and front PTO shafts
- Transmission gear and engine speed
- Four-wheel drive and differential lock
- Sprung front axle





ISOBUS.

The sole purpose of the CEBIS terminal is to present the functions relating to the tractor. To connect ISOBUS-compatible implements with the ARION, CLAAS provides the COMMUNICATOR. Single implement functions can be operated via the COMMUNICATOR or the function keys in the armrest.

Manage implements with CEBIS.

CEBIS makes it possible to store different implements along with their settings and sequences:

- Up to four CSM sequences
- Assignment of function keys on the armrest
- Working width of the implement
- Hectare-count mode (radar speed or wheel speed)
- Criteria for actuation of hectare counter



CSM
ISOBUS

With the GPS PILOT or CAM PILOT, you can also save a load of money.

Optimising operating costs.

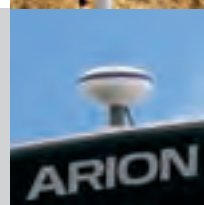
Research into tillage systems show that there is often an increase in overlap for greater working widths that don't use a guidance system. That means 7% diesel fuel, machine costs, fertiliser and pesticide, which could easily be saved with a modern guidance system.

Increase the quality of your work.

CLAAS guidance systems ease the driver's workload. They show in advance which direction to take and automatically steer the tractor to the best track. This prevents errors and allows the driver to concentrate on the machine settings with significantly better working results.



The OMNISTAR HP receiver for GPS signal and GPS reference signal.



The GPS receiver on the BASELINE HD system. This includes an extra radio receiver for the reference signal.



Correction signal as required.

CLAAS has set up its range of systems in such a way that you can easily extend them at any time. This applies just as much to the terminal technology as to using any of today's essential correction signals.

GPS PILOT OMNISTAR HP.

- Accuracy +/- 5 to 10 cm
- DGPS dual frequency
- Correction signal received by satellite
- Quarterly or annual licence costs for the reference signal

GPS PILOT RTK.

- Accuracy +/- 2 to 3 cm
- Up to 20 km coverage
- No licence fees
- Maximum steering precision
- Reference signal can be set by the local dealer
- For fleets of machinery or for outsourcing

GPS PILOT BASELINE HD.

- Accuracy +/- 4 to 6 cm
- Farm has its own mobile reference station
- Range 3–5 km
- Public reference signal
- Reference station can be used by more than one machine at the same time

CAM PILOT.

- 3D camera mounted on the front of the tractor
- Accuracy +/- 5 cm
- Tractor follows the rows of plants, tramlines, furrows or swaths

CLAAS steering systems and correction signals are approved and supplied for retrofitting subject to local conditions.



The CAM PILOT camera in the tractor front mounting

GPS PILOT
CAM PILOT

CEBIS manages everything that might affect your concentration.



Excellent task management.

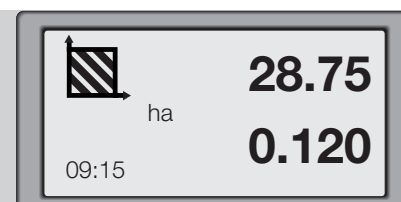
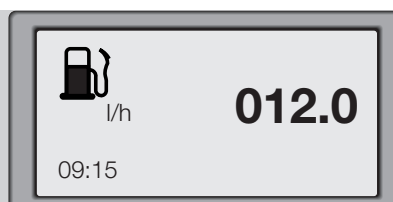
One name says it all: CLAAS CEBIS. It provides a good overview and facilitates comprehensive, perfect task management. You can determine and change the settings, programme processes and display the task status. Of course, all kinds of implement settings and headland frequencies can also be saved. All that enormously speeds up the work order processing, and pays for itself year in, year out.

Efficient display.


The high-contrast display is large and straightforward, with quick access to the menus. Nothing will distract or irritate you, as you'll see only the information required at that particular moment. A smooth-running selector facilitates precise and intuitive operation.


Keeping all the important information in view with CIS:

- Fuel consumption
- Area output
- Finished surface area
- Remaining working hours






0.045
 ha/h
0.043
 09:15


008.3
 h
 09:15

Increasing productivity



FIRST CLAAS SERVICE® around the clock.

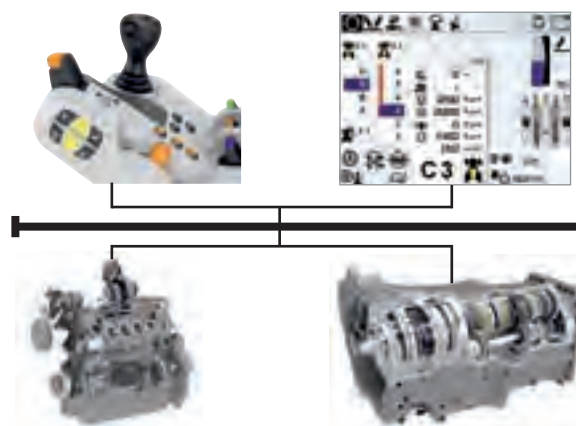
Our years of experience and enormous knowledge base have familiarised us like no one else with the working methods and individual requirements of every farming business. So we know exactly what it all comes down to, including the service aspects. Our FIRST CLAAS SERVICE® package is therefore synonymous with absolute reliability and professionalism.

We are there for you when you need us.

We provide your farm with the required ORIGINAL CLAAS spare parts any time – reliably and, most importantly, fast, keeping potential downtime as short as possible. You know as well as we do – time is money.

CAN BUS technology in the ARION.

The ARION communicates via four CAN BUS systems, which replace the old-fashioned wiring to all the user functions. Up to 15 controllers are connected by means of the CAN data bus, a joint communication circuit. This saves up to 1.5 kilometres of cable, facilitates innovative solutions such as the CSM headland management, and significantly eases service and diagnosis.



Good partners never leave you in the lurch – no matter what time of day it is.

Dedicated teams.

Our service teams enjoy their work and know exactly what they're talking about, because expert knowledge and commitment are the perfect basis for successful teamwork. That means you'll always be the kind of customer we're happy to have – entirely satisfied.



ISOBUS



CAN BUS



Ensuring reliability in the field

CEBIS terminal, optionally with up to 6 electronic spool valves

CIS display and up to 4 mechanical plus 2 additional electronic spool valves with ELECTROPILOT

Multifunction armrest with DRIVESTICK

DPS 4.5-l, 4-cylinder (ARION 500)
DPS 6.8-l, 6-cylinder (ARION 600) with:
– Common-rail injection system
– 4-valve technology
– VGT turbo
– Charge-air cooler
– External, cooled exhaust gas recirculation

Integrated front linkage with front PTO shaft

PROACTIV suspended front axle

Perfectly matched HEXASHIFT transmission

Long wheelbase

Load-sensing hydraulics

GPS PILOT and CAM PILOT automatic guidance systems

Up to 14 spotlights, with four optional Xenon lights available

Skylight

CAN BUS electronic architecture

New hydraulic connections

Remote control on the mudguard for lifting, PTO shaft and an electronic spool valve

4-point cab suspension

Automatic PTO control

40 or 50 km/h at 1,900 rpm, available on all models

Exception: ARION 510 – 40 km/h only



ARION

		640	630	620	610	540	530	520	510
Engine									
Manufacturer		DPS	DPS	DPS	DPS	DPS	DPS	DPS	DPS
Number of cylinders/intake		6/TI	6/TI	6/TI	6/TI	4/TI	4/TI	4/TI	4/TI
Cubic capacity	cm ³	6,788	6,788	6,788	6,788	4,525	4,525	4,525	4,525
Nominal engine speed	rpm	2,200	2,200	2,200	2,200	2,200	2,200	2,200	2,200
Output at nominal engine speed	kW/hp	114/155	107/145	99/135	88/120	99/135	96/130	88/120	81/110
(ISO TR 14396)									
Max. output (ISO TR 14396)	kW/hp	118/160	114/155	103/140	96/130	103/140	98/133	93/127	86/117
Max. output with CPM (ISO TR 14396)	kW/hp	132/180	–	–	–	118/160	–	–	–
Output at nominal engine speed (ECE R 24)	kW/hp	110/150	103/140	96/130	85/115	96/130	92/125	85/115	77/105
Max. output (ECE R 24)	kW/hp	114/155	110/150	99/135	92/125	99/135	94/128	90/122	82/112
Max. output with CPM (ECE R 24)	kW/hp	129/175	–	–	–	114/155	–	–	–
Max. output at engine speed	rpm	2,000	2,000	2,000	2,000	2,000	2,000	2,000	2,000
Constant output	rpm	500	550	400	400	550	500	500	400
Engine speed at max. torque	rpm	1,650	1,650	1,650	1,650	1,650	1,650	1,650	1,650
Max. torque (ISO TR 14396)	Nm	657	633	580	534	585	541	526	477
Max. torque with CPM (ISO TR 14396)	Nm	718	–	–	–	619	–	–	–
Max. torque (ECE R 24)	Nm	656	630	571	527	577	530	520	470
Max. torque with CPM (ECE R 24)	Nm	710	–	–	–	610	–	–	–
Electronically controlled injection pump		●	●	●	●	●	●	●	●
Air filter dust aspiration		●	●	●	●	●	●	●	●
Max. fuel capacity	l	330	330	330	330	250	250	250	250
Oil-change interval	h	500	500	500	500	500	500	500	500
Transmission									
Ratios F/R		24/24	24/24	24/24	24/24	24/24	24/24	24/24	24/24
Min. speed	km/h	1.6	1.5	1.7	1.6	1.6	1.6	1.6	1.6
Max. speed	km/h	40/50	40/50	40/50	40/50	40/50	40/50	40/50	40
REVERSHIFT clutchless reverser		●	●	●	●	●	●	●	●
Number of powershift steps		6	6	6	6	6	6	6	6
Electrically controlled ranges		4	4	4	4	4	4	4	4
HEXACTIV		○	○	○	○	○	○	○	○
Creep range	km/h	0.41	0.38	0.42	0.41	0.41	0.41	0.41	0.41
Extra-slow	km/h	0.11	0.11	0.12	0.12	0.12	0.12	0.12	0.12
Oil-change interval	h	1,000	1,000	1,000	1,000	1,000	1,000	1,000	1,000
Rear axle									
Electrohydraulically connected differential locks		●	●	●	●	●	●	●	●
Automatic differential locks		●	●	●	●	●	●	●	●
Max. rear tyres		650/ 65 R38	650/ 65 R38	650/ 65 R38	600/ 65 R38	600/ 65 R38	600/ 65 R38	600/ 65 R38	600/ 65 R38
PTO									
Wet multidisc clutch		●	●	●	●	●	●	●	●
Remote control engagement and emergency stop		●	●	●	●	●	●	●	●
540/1000		○	○	○	○	○	○	○	○
540/540E/1000/1000E		●	●	●	●	●	●	●	●
PTO shaft		●	●	●	●	●	●	●	●
Changeable PTO shaft stub		●	●	●	●	●	●	●	●
Number of splines		6/21	6/21	6/21	6/21	6/21	6/21	6/21	6/21
Automatic PTO shaft		●	●	●	●	●	●	●	●

● Standard ○ Option ■ Available – Not available

ARION

		640	630	620	610	540	530	520	510
4-wheel drive front axle									
Electrohydraulic operation		●	●	●	●	●	●	●	●
Automatic 4-wheel drive		●	●	●	●	●	●	●	●
Max. steering angle	degrees	55	55	55	55	55	55	55	55
Castor angle	degrees	6	6	6	6	6	6	6	6
Angle of oscillation	degrees	10	10	10	10	10	10	10	10
Steering radius	m	4.9	4.9	4.9	4.8	4.5	4.5	4.5	4.4
Track	mm	2,050	2,050	2,050	1,950	1,950	1,950	1,950	1,950
with tyres		16.9 R 28	16.9 R 28	16.9 R 28	14.9 R 28	14.9 R 28	14.9 R 28	14.9 R 28	13.6 R 28
Wet multidisc clutch		●	●	●	●	●	●	●	●
PROACTIV suspended front axle		○	○	○	○	○	○	○	○
Fixed mudguards		○	○	○	○	○	○	○	○
Pivoting mudguards		○	○	○	○	○	○	○	○
Hydraulics									
Open hydraulic circuit		–	–	–	–	●	●	●	●
Flow at rated speed	l/min	–	–	–	–	60	60	60	60
Max. operating pressure	bar	–	–	–	–	200	200	200	200
Load-sensing circuit		●	●	●	●	○	○	○	○
Flow at rated speed	l/min	110	110	110	110	110	110	110	110
Max. operating pressure	bar	200	200	200	200	200	200	200	200
Number of control valves (min./max.)		2–6	2–6	2–6	2–6	2–6	2–6	2–6	2–6
Quantity control		●	●	●	●	●	●	●	●
ELECTROPILOT 4-way control		○	○	○	○	○	○	○	○
Rear lifting arms									
Max. lifting power at ball ends	kg	8,000	6,900	6,500	6,500	6,500	6,500	6,500	6,500
Continuous lifting power at 610 mm	kg	5,100	4,200	4,100	4,100	4,100	4,100	4,100	4,100
Lifting range	mm	812	748	745	745	745	745	745	745
Vibration dampening		●	●	●	●	●	●	●	●
Active slip control		○	○	○	○	○	○	○	○
Trailer hydraulic brake		●	●	●	●	●	●	●	●
Air-brake system		○	○	○	○	○	○	○	○
Trailer plug		●	●	●	●	●	●	●	●
25 ampere socket		●	●	●	●	●	●	●	●
Front lift linkage									
Max. lifting capacity at 610 mm	t	3.2/4	3.2/4	3.2/4	3.2/4	3.2/4	3.2	3.2	3.2
Front PTO shaft 1,000 rpm		○	○	○	○	○	○	○	○
External operation		○	○	○	○	○	○	○	○
Hydraulic connections		○	○	○	○	○	○	○	○
Trailer plug		○	○	○	○	○	○	○	○
Cab									
CIS with mechanical spool valves		●	●	●	●	●	●	●	●
CEBIS with electronic spool valves		○	○	○	○	○	○	○	○
4-point suspension		●	●	●	●	●	●	●	●
Multifunction armrest		●	●	●	●	●	●	●	●
Air conditioning		●	●	●	●	●	●	●	●
Automatic climate control		○	○	○	○	○	○	○	○
Passenger seat		●	●	●	●	●	●	●	●
Cooler compartment		●	●	●	●	●	●	●	●

● Standard ○ Option ■ Available – Not available

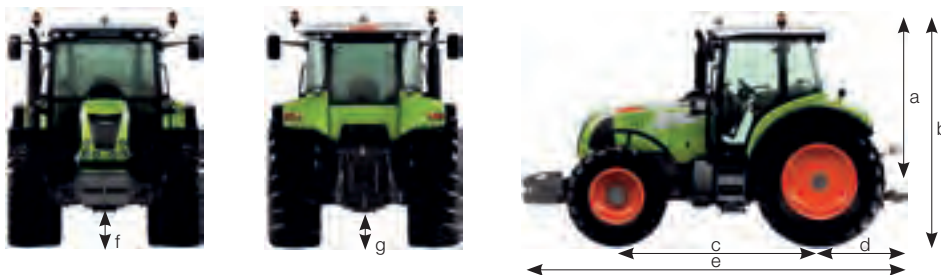
ARION

		640	630	620	610	540	530	520	510
Dimensions									
Height									
Rear wheels		20.8 R 38	20.8 R 38	20.8 R 38	18.4 R 38	18.4 R 38	18.4 R 38	18.4 R 38	16.9 R 38
Front wheels		16.9 R 28	16.9 R 28	16.9 R 28	14.9 R 28	14.9 R 28	14.9 R 28	14.9 R 28	13.6 R 28
Centre rear axle – cab upper edge (a)	mm	2,180	2,180	2,180	2,180	2,156	2,156	2,156	2,156
Overall height (b)	mm	3,007	3,007	3,007	2,985	2,961	2,961	2,961	2,916
Length									
Wheelbase (c)	mm	2,820	2,820	2,820	2,820	2,560	2,560	2,560	2,560
Clearance, rear axle – lower link (d)	mm	1,198	1,198	1,198	1,198	1,198	1,198	1,198	1,198
Length (with front ballast and trailer hitch) (e)	mm	5,155	5,155	5,155	5,155	4,889	4,889	4,889	4,889
Ground clearance									
Front axle (f)	mm	541	541	541	516	516	516	516	491
Rear axle (g)	mm	501	501	491	488	488	488	488	443
Weights (standard tyres, with oil and fuel, fixed front axle, with driver)									
Rear wheels		20.8 R 38	20.8 R 38	20.8 R 38	18.4 R 38	18.4 R 38	18.4 R 38	18.4 R 38	16.9 R 38
Front wheels		16.9 R 28	16.9 R 28	16.9 R 28	14.9 R 28	14.9 R 28	14.9 R 28	14.9 R 28	13.6 R 28
Weight without ballast	kg	6,260	6,220	5,950	5,720	5,470	5,470	5,470	5,380
PROACTIV weight	kg	+ 227	+ 227	+ 179	+ 179	+ 179	+ 179	+ 179	+ 179
Max. front ballast without front	kg	1,254	954	954	804	804	804	804	804
Weight distribution with ballast (rear/front)	%	45/55	47/53	46/54	47/53	46/54	46/54	46/54	46/54
Max. permissible gross weight (40 km/h version)	kg	11,000	11,000	10,250	8,800	8,800	8,800	8,800	8,800
Max. permissible gross weight (50 km/h version)	kg	9,250	9,250	8,800	8,800	8,800	8,800	8,800	–

Tyres (standard axle or sprung front axle)

Rear tyres	Front tyres	640	630	620	610	540	530	520	510
16.9 R 38 (420/85 R 38)	13.6 R 28 (340/85 R 28)	–	–	–	□	□	□	□	□
480/70 R 38	380/70 R 28	–	–	–	□	□	□	□	□
540/65 R 38	440/65 R 28	–	–	–	□	□	□	□	□
18.4 R 38 (460/85 R 38)	14.9 R 28 (380/85 R 28)	–	□	□	□	□	□	□	□
600/65 R 38	480/65 R 28	–	□	□	□	□	□	□	□
520/70 R 38	420/70 R 28	–	□	□	□	□	□	□	□
20.8 R38 (520/85 R 38)	16.9 R 28 (380/85 R 28)	□	□	□	–	–	–	–	–
580/70 R 38	480/70 R 28	□	□	□	–	–	–	–	–
650/65 R 38	540/65 R 28	□	□	□	–	–	–	–	–
600/60 R 38*	480/60 R 28*	–	–	–	□	□	□	□	□
650/60 R 38*	520/60 R 28*	□	□	□	□	□	□	□	□

● Standard ○ Optional ■ Available – Not available * XEOBIB



CLAAS continually develops its products to meet customer requirements. This means that all products are subject to change without notice. All descriptions and specifications in this brochure should be considered approximate and may include optional equipment that is not part of the standard specifications. This brochure is designed for worldwide use. Please refer to your nearest CLAAS dealer and their price list for local specification details. Some protective panels may have been removed for photographic purposes in order to present the function clearly. To avoid any risk of danger, never remove these protective panels yourself. In this respect, please refer to the relevant instructions in the operator's manual.

Specifications



CLAAS UK
Saxham
Bury St. Edmunds
Suffolk
IP28 6QZ
Tel 01284 763100
claas.co.uk
info-uk@claas.com
331012130909 KK Be 0110